

ViaLiteHD® – ODE-MINI

Small Outdoor Enclosure

- Houses 2x *ViaLite* links up to 4.2 GHz or 1x C-Band link 500 MHz to 7.5 GHz
- SNMP management option
- Gigabit Ethernet switch option
- LNA/B powering option
- Waterproof Power, Fiber and Ethernet outdoor connectors
- Compact, IP65 rated enclosure
- Standard 5-year warranty

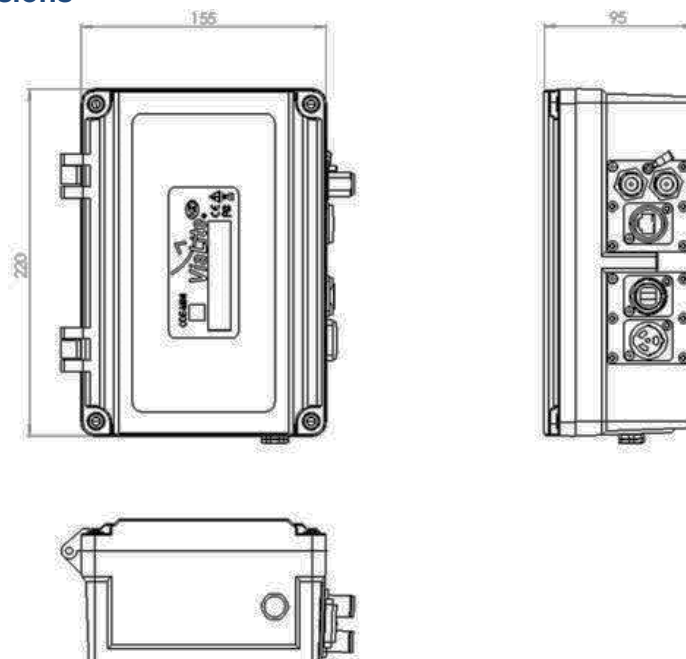


The *ViaLiteHD* ODE-MINI is a versatile enclosure designed for compact locations. The enclosure is cast aluminium and has an IP65 ingress protection rating. It is typically installed on a rooftop or antenna hub where RF and other services are transmitted over optical fiber to a remote equipment room. With options for fully integrated SNMP, Mini Ethernet Switch and LNA/B power, this enclosure is class leading for its size and cost.

Options

- Houses 1x C-Band Link up to 7.5 GHz or 2x Blue OEM modules for any *ViaLite* RF link up to 4.2 GHz (including L-Band HTS)
- 3 port mini gigabit Ethernet switch supporting 1x Optical SFP and 2 x RJ45 ports
- LNA/B Power board supporting 13,15,18, 24 VDC feeds power to external devices through RF connection
- SNMP management allowing module configuration and monitoring
- Dual redundant PSUs supported (if Ethernet switch is not fitted).

Enclosure dimensions



Technical specifications

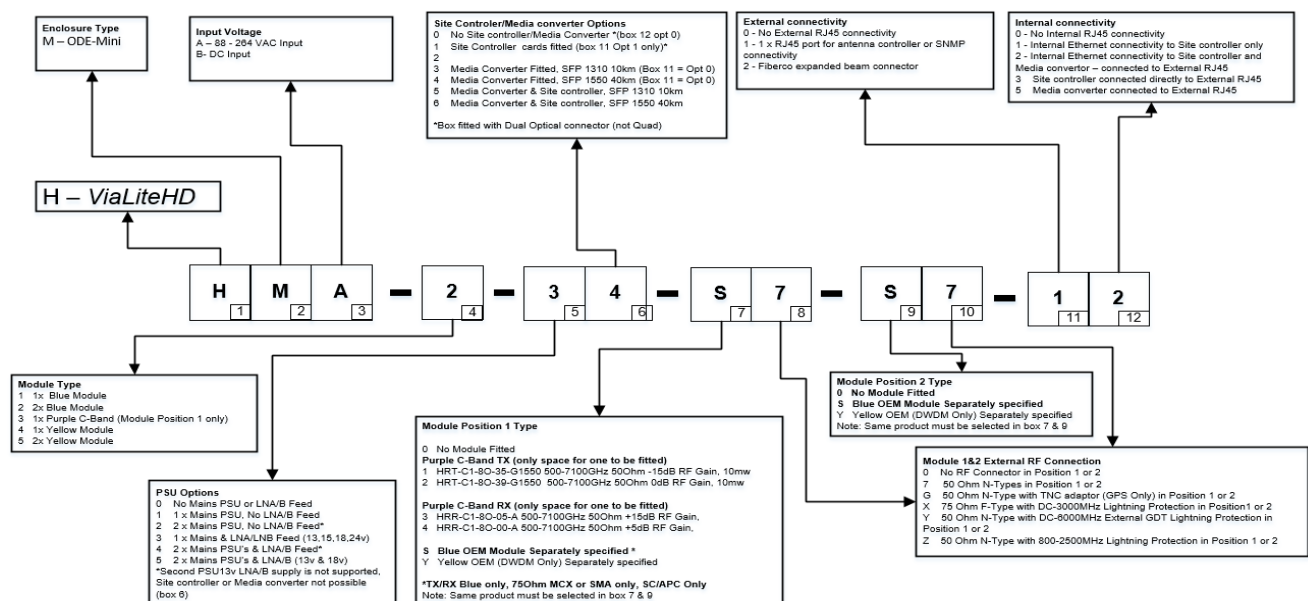
Parameter	ODE-MINI Enclosure
Number of RF channels	2x Links to 4.2 GHz or 1x C-Band Link to 7.5 GHz
IP Rating	IP65
External Dimensions	220 x 155 x 95 mm
Weight	2.65 kg
Material	Cast aluminium
RF Input / Output Connectors	N-Type female weatherproof
Optical Fiber Connections	Quad single mode connector Neutrik
Power Supply Connections	Neutrik power connector
PSU Options	Single or dual redundant
Supply Voltage Options	88-264 VAC
Operating Temperature	-20 to +60 °C
Storage Temperature	-40 °C to +70 °C
Climate Control	Humidity ventilator
Parameter	LNB Voltage Source Specifications
Output Voltage	13,15,18, 24 VDC
Output Power	13.5 W
Voltage Tolerance	+/- 2 %
Line Regulation	+/- 0.5 %
Load Regulation	+/- 0.5 %
Ripple & Noise	< 120 mV P-P

Popular products

HMA-2-35-S7-S7-12

ODE-MINI, 88-264 VAC input, 2 x Blue Modules (L-Band), Media Converter & Site Controller SFP 1310 km, 1# Separately Specified Blue Module, 1# 50 Ohm N-Type, 2# Separately Specified Blue Module, 2# 50 Ohm N-Type, RJ45 Port for Antenna Controller or SNMP Connectivity, Internal Ethernet Connectivity to Site Controller and Media Converter – Connected to External RJ45

Product specifications



Separately ordered accessories

Fiber Termination Box (4-Way)

To ease the installation process any multicore optical fiber can be terminated in the accompanying patch box. As standard, the patch cable presents SC/APC connections within the patch box (see picture).



Internal termination options

- 54886 – SC/APC to FC/APC
- 54888 – SC/APC to SC/APC
- 54889 – SC/APC to LC/APC

ODE-A4 optical cable options

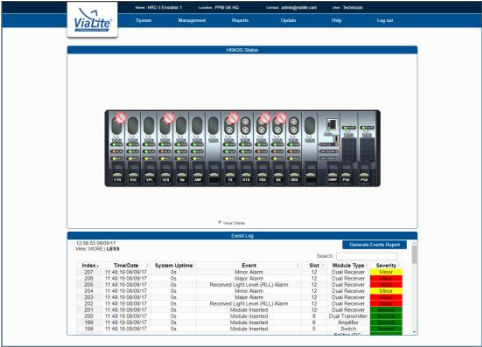
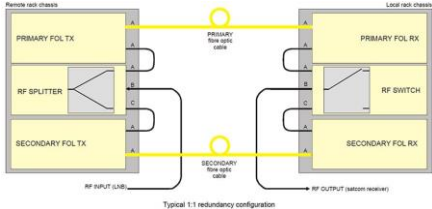


Quad waterproof light duty (no cable management reel)

- | | |
|------------------|--|
| F04-Q-3F-Q8-0001 | Quad Waterproof connector to SC/APC 1 m SC/APC Connector |
| F04-Q-3F-Q8-0003 | Quad Waterproof connector to SC/APC 3 m SC/APC Connector |
| F04-Q-3F-Q8-0010 | Quad Waterproof connector to SC/APC 10 m SC/APC Connector |
| F04-Q-3F-Q8-0020 | Quad Waterproof connector to SC/APC 20 m SC/APC Connector |
| F04-Q-3F-Q8-0050 | Quad Waterproof connector to SC/APC 50 m SC/APC Connector |
| F04-Q-3F-Q8-0100 | Quad Waterproof connector to SC/APC 100 m SC/APC Connector |

Quad waterproof heavy duty (with cable management reel)

- | | |
|------------------|--|
| F04-R-5F-Q8-0050 | Quad Waterproof connector to SC/APC 50 m SC/APC Connector |
| F04-R-5F-Q8-0100 | Quad Waterproof connector to SC/APC 100 m SC/APC Connector |
| F04-R-5F-Q8-0150 | Quad Waterproof connector to SC/APC 150 m SC/APC Connector |
| F04-R-5F-Q8-0200 | Quad Waterproof connector to SC/APC 200 m SC/APC Connector |

Accessories

Type	Key Features
<p>SNMP/Web Browser Card</p> 	<ul style="list-style-type: none"> • Easy to use graphical user interface (GUI) • Real time monitoring of card performance • Alarm monitoring and event logging • Control of gain adjustment • Compatible with all ViaLiteHD rack chassis and cards • Easy integration with network management systems (NMS) using management information base (MIB) tables • Actively manage redundancy switching • New RF cards can be automatically reprogrammed with the previous card parameters • Remote SNMP to local SNMP connection via optical fiber • Provides remote LAN 10/100 Ethernet link
<p>Dual Redundancy</p> 	<ul style="list-style-type: none"> • 1:1 redundancy for L-Band • Maximises link up-time • Can be used to backup copper coax • Manual and automatic control via SNMP • Flexible configuration options • Other redundancy options available
<p>Rack Chassis</p> 	<ul style="list-style-type: none"> • 3U accepts up to 13 RF or Support cards, plus an SNMP card and dual power supplies • A 1U chassis accepts up to 3 RF or Support cards or 2 cards and an SNMP card (with dual power supplies) • Up to 26 channels per 3U chassis (using dual RF cards) – reducing the amount of rack space required • Blind mate option • All modules hot-swappable and auto-reconfigure with SNMP option • On-card LNB and BUC power options • Power fed through rear chassis connector to card Bias Tees • System can be monitored and controlled remotely via SNMP using a web browser
<p>Outdoor Enclosures</p> 	<p>Further enclosures available:</p> <ul style="list-style-type: none"> • CE approved and EMC compatible • IP rated and NEMA approved • Plug and play format • Suitable for harsh environments • All modules hot swappable • Dual redundant power options • Interface for monitor and control (M&C) systems